



**NATIONAL KIDNEY REGISTRY**<sup>®</sup>  
FACILITATING LIVING DONOR TRANSPLANTS



**KIDNEY FOR LIFE**  
BETTER MATCHES = BETTER OUTCOMES

**Quarterly Report**

Q4 2024

# Table of Contents

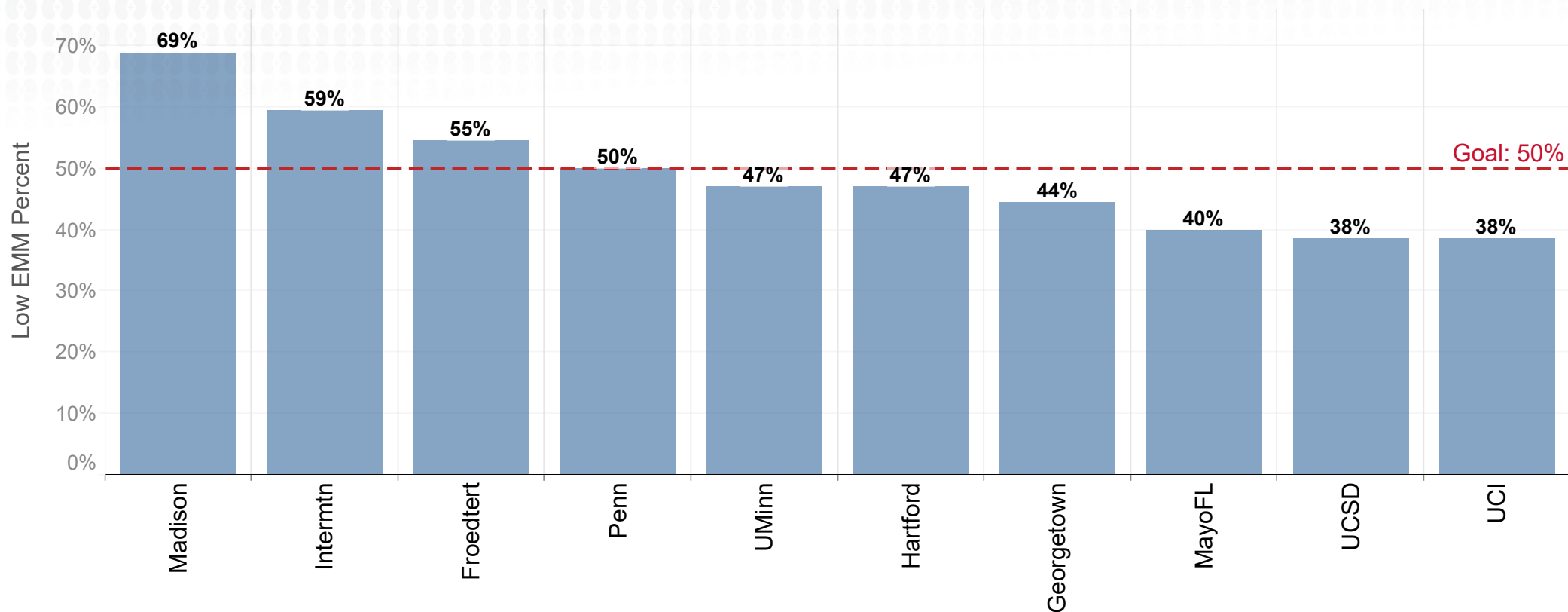
---

Top 10 KFL Centers: 6-Month Success Rate <i>Low EMM TXPs as a Percent of All High-Resolution Typed TXPs</i> .....	3
Low Eplet Mismatch Transplants <i>Compatible Pairs</i> .....	4
Compatible Pair Transplants .....	5
DNA Collection for Donors and Patients <i>More Patients are Returning the DNA Collection Kit</i> .....	6
Percent of Voucher and Paired Transplants as Low Eplet Mismatch .....	7
1-Year Antibody Screening Results <i>Unsensitized Recipients (n = 312)</i> .....	8
Top 10 KFL Centers: Low Eplet Mismatch Transplants <i>Compatible and Incompatible Pairs: Last 12 Months</i> .....	9
Top 10 KFL Centers: Low Eplet Mismatch Transplants <i>Compatible Pairs: Last 12 Months</i> .....	10
Actual Wait Times: Low Eplet Mismatch Transplants <i>Compatible Pairs: Last 12 Months</i> .....	11
Expert System Center Growth .....	12
Resources .....	13



# Top 10 KFL Centers: 6-Month Success Rate

Low EMM TXPs as a Percent of All High-Resolution Typed TXPs



Low EMM TXPs	11	19	12	22	16	8	12	8	5	5
All High-Res. Typed TXPs <sup>2</sup>	16	32	22	44	34	17	27	20	13	13

1. Minimum 10 high-res. typed TXPs.

2. All high-res. typed TXPs = Any NKR transplanted patients who completed high-res. tissue typing.

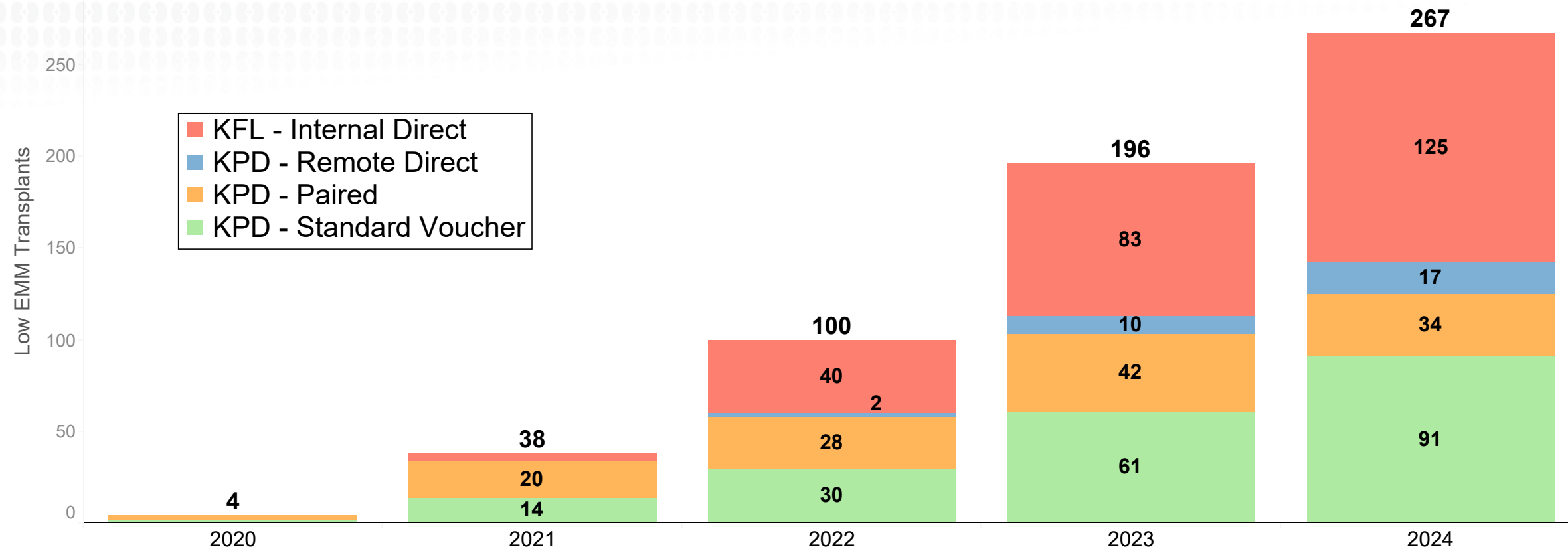
3. Low eplet mismatch transplants / All high-res. typed transplants.

As of 1/1/2025



# Low Eplet Mismatch Transplants

## Compatible Pairs



1. Excludes waitlist

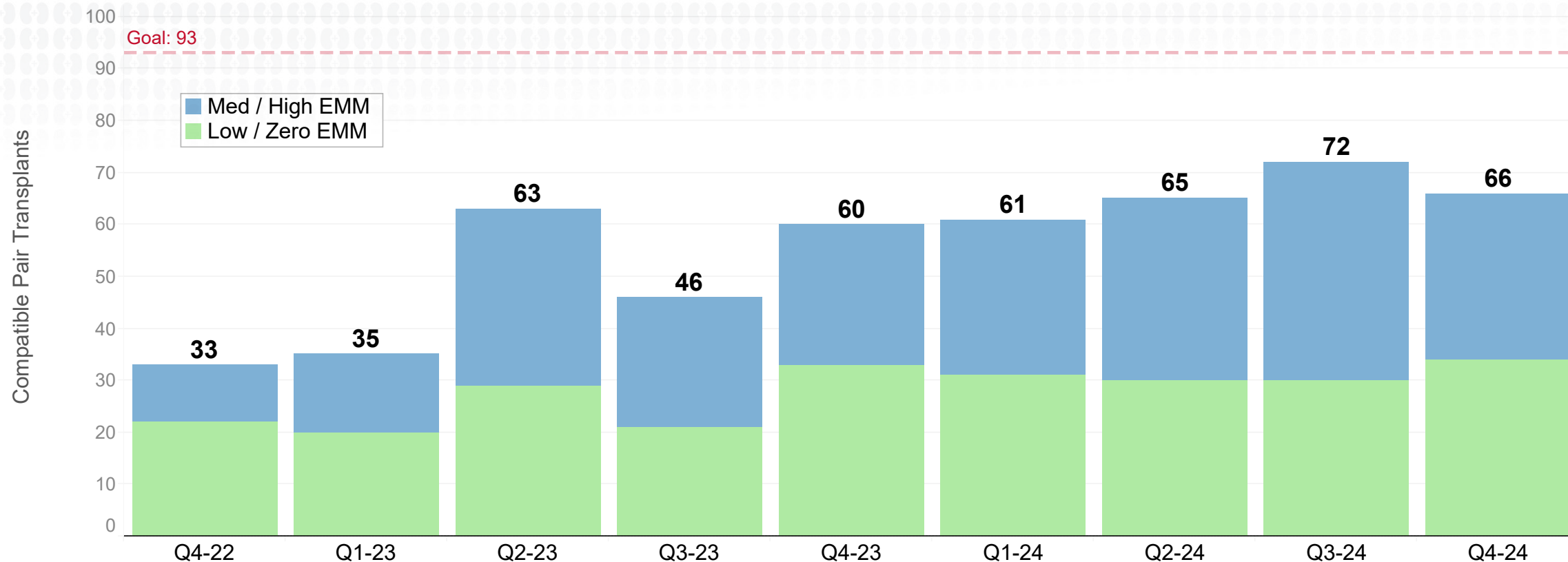
2. The Kidney for Life (KFL) initiative of the National Kidney Registry provides an opportunity for a better donor-recipient match

3. Eplet mismatch categories are based on the definition provided by Wiebe C, Kosmoliaptsis V, Pochinco D, et al. HLA-DR/DQ molecular mismatch: a prognostic biomarker for primary alloimmunity. *Am J Transplant*. 2019;19:1708-1719. <https://doi.org/10.1111/ajt.15177>

As of 1/1/2025



# Compatible Pair Transplants



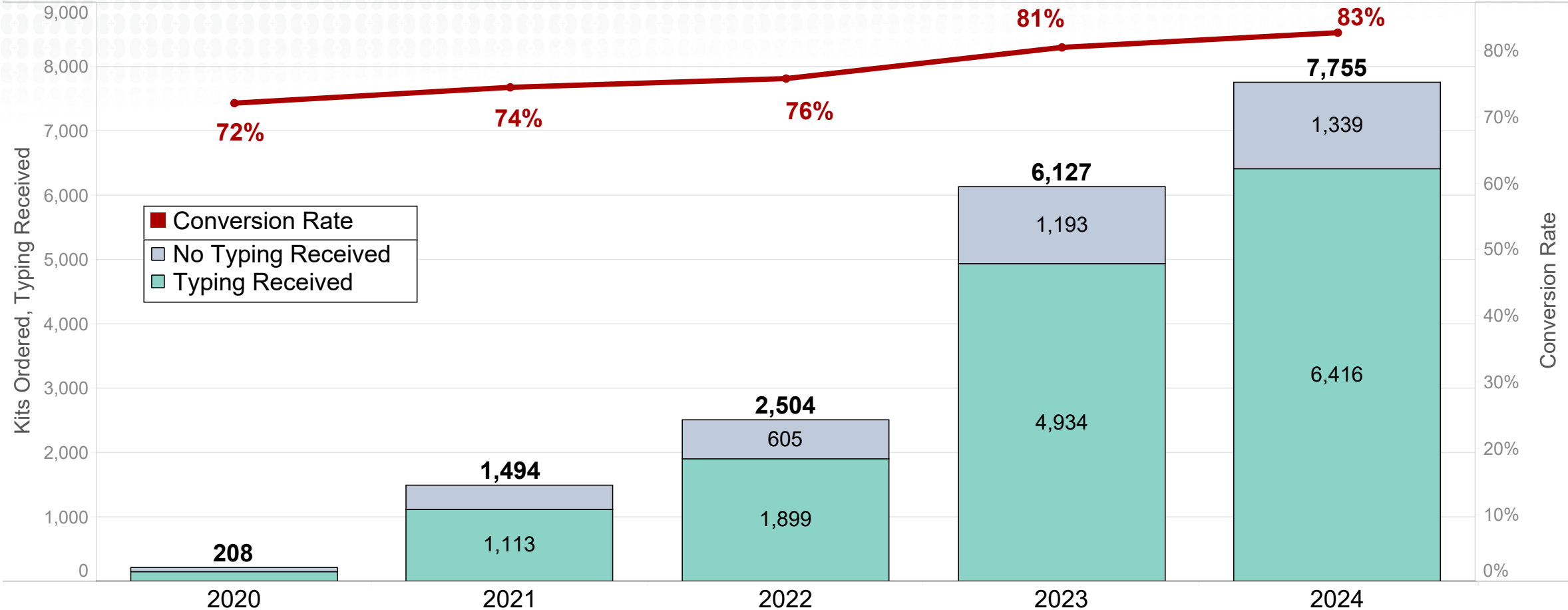
	Q4-22	Q1-23	Q2-23	Q3-23	Q4-23	Q1-24	Q2-24	Q3-24	Q4-24
<b>Med / High EMM</b>	11	15	34	25	27	30	35	42	32
<b>Low / Zero EMM</b>	22	20	29	21	33	31	30	30	34

1. Paired and voucher recipients across the NKR network
2. A compatible pair is defined as a donor and recipient who are biologically compatible via blood type and antibody compatibility
3. EMM = Eplet Mismatch  
Kidney only  
As of 1/1/2025



# DNA Collection for Donors and Patients

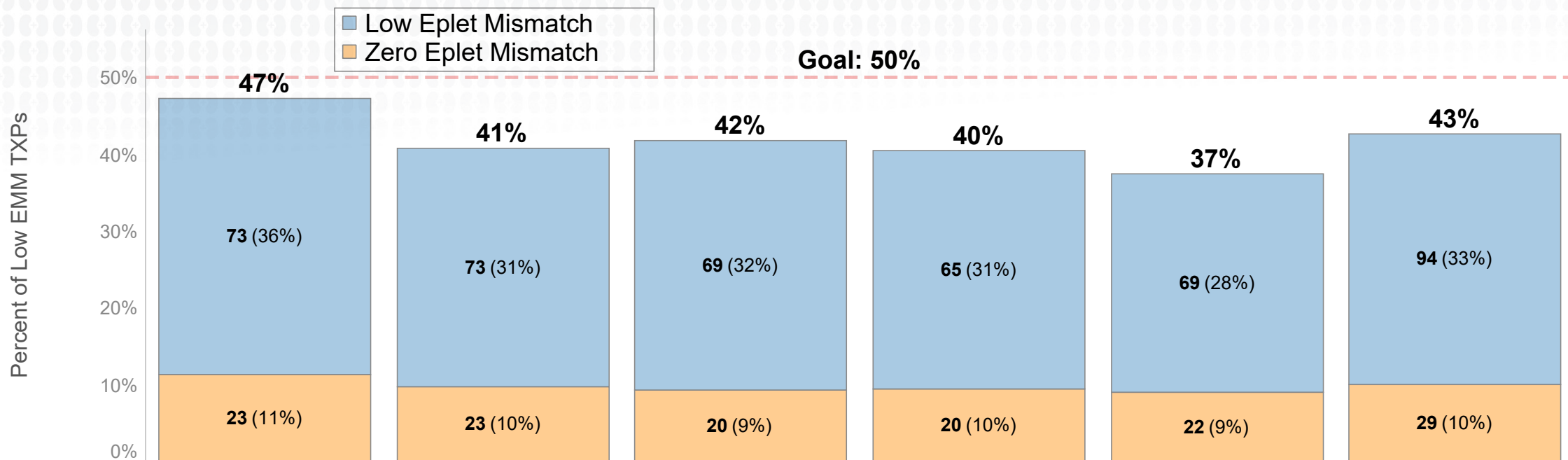
More Patients are Returning the DNA Collection Kit



1. Excludes family voucher holders  
 2. Excludes all data within the last 40 days to account for lag time to return the kits  
 Kidney only  
 As of 1/1/2025



# Percent of Voucher and Paired Transplants as Low Eplet Mismatch



	Q3-23		Q4-23		Q1-24		Q2-24		Q3-24		Q4-24	
High Eplet Mismatch	21	10%	27	11%	28	13%	24	11%	23	9%	37	13%
Medium Eplet Mismatch	86	42%	112	48%	96	45%	101	48%	129	53%	128	44%
Low Eplet Mismatch	73	36%	73	31%	69	32%	65	31%	69	28%	94	33%
Zero Eplet Mismatch	23	11%	23	10%	20	9%	20	10%	22	9%	29	10%
<b>Grand Total</b>	<b>203</b>	<b>100%</b>	<b>235</b>	<b>100%</b>	<b>213</b>	<b>100%</b>	<b>210</b>	<b>100%</b>	<b>243</b>	<b>100%</b>	<b>288</b>	<b>100%</b>

Eplet mismatch categories are based on the definition provided by Wiebe C, Kosmoliaptsis V, Pochinco D, et al. HLA-DR/DQ molecular mismatch: a prognostic biomarker for primary alloimmunity. Am J Transplant. 2019;19:1708–1719. <https://doi.org/10.1111/ajt.15177>

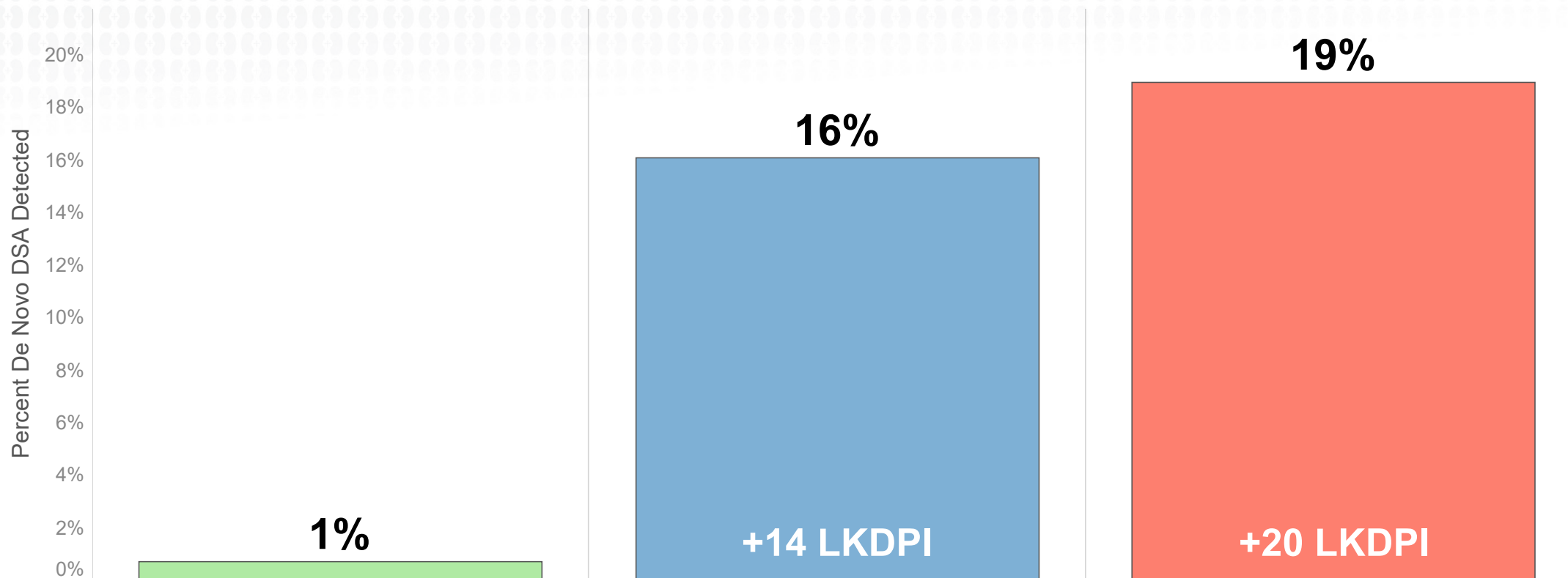
Kidney only

As of 1/1/2025



# 1-Year Antibody Screening Results

Unsensitized Recipients (n = 312)



Eplet Mismatch	Low	Med	High
Screening Completed	138	137	37
DN DSA Detected	1	22	7
% DN DSA Detected	1%	16%	19%

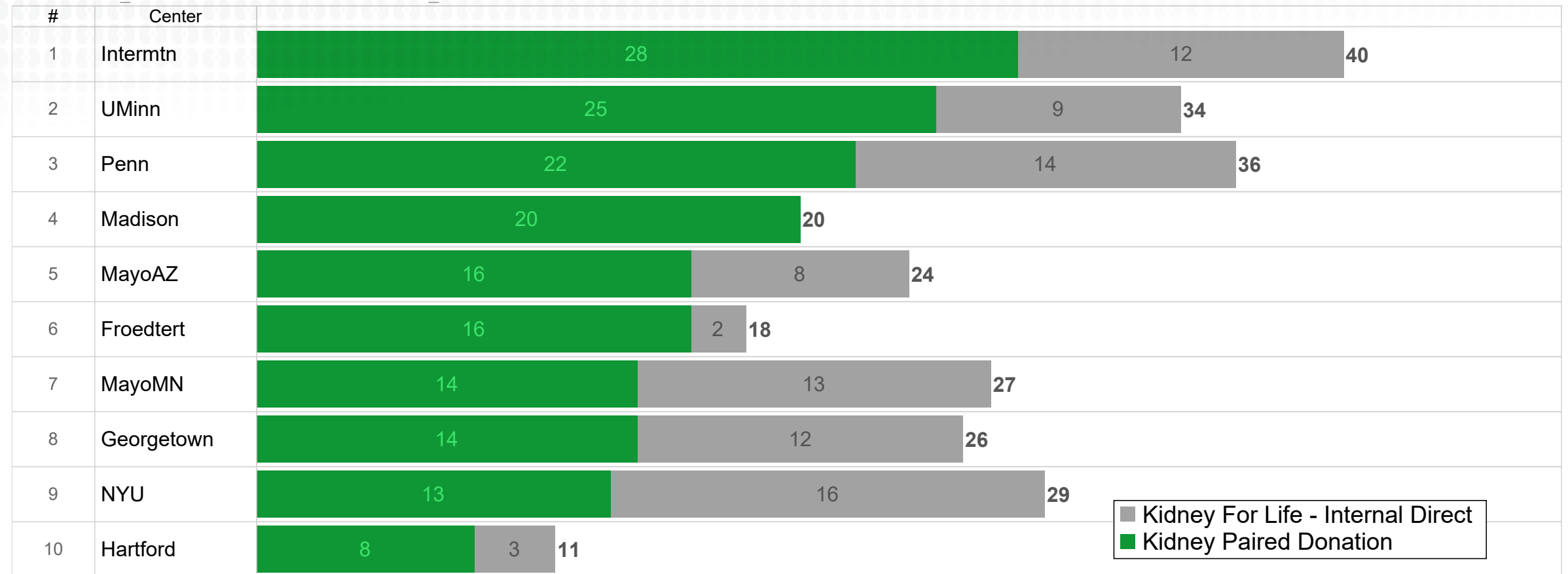
Unsensitized recipients have a cPRA of 0  
Kidney only  
As of 1/1/2025





# Top 10 KFL Centers: Low Eplet Mismatch Transplants

Compatible and Incompatible Pairs: Last 12 Months



1.Excludes waitlist

2.The Kidney for Life (KFL) initiative of the National Kidney Registry provides an opportunity for a better donor-recipient match

3.Eplet mismatch categories are based on the definition provided by Wiebe C, Kosmoliaptsis V, Pochinco D, et al. HLA-DR/DQ molecular mismatch: a prognostic biomarker for primary alloimmunity. Am J Transplant. 2019;19:1708-1719. <https://doi.org/10.1111/ajt.15177>

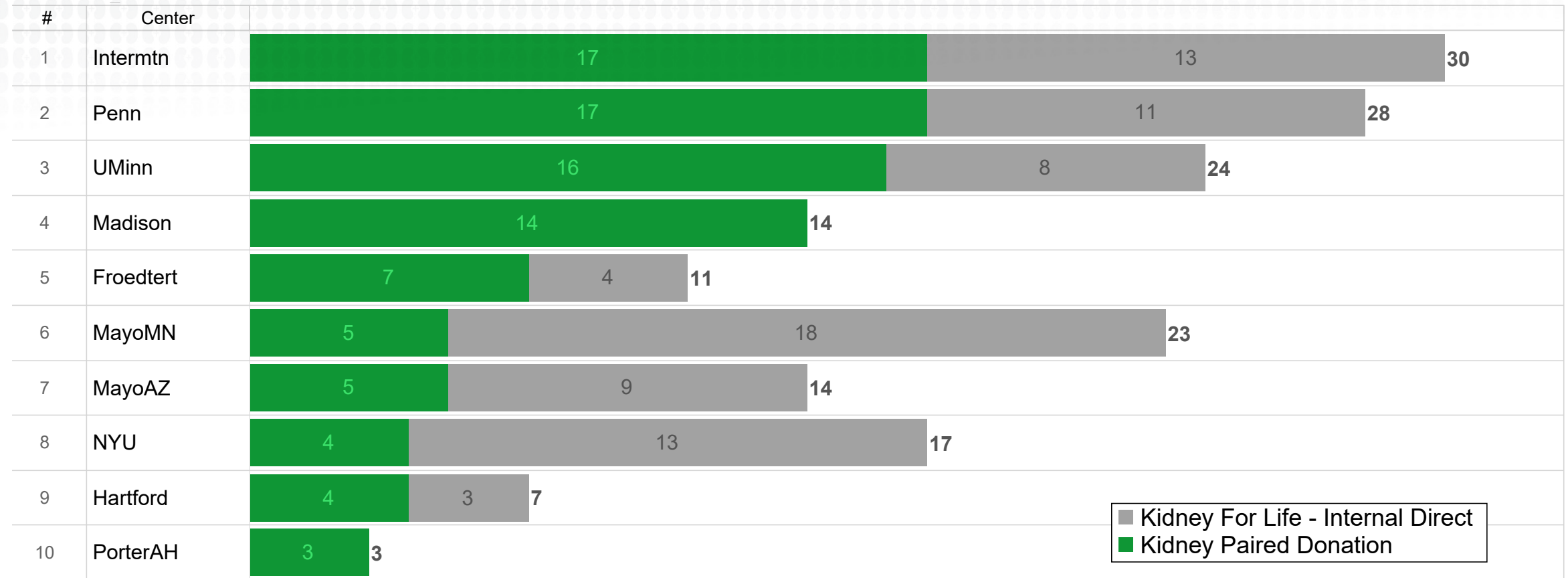
Kidney only

As of 1/1/2025



# Top 10 KFL Centers: Low Eplet Mismatch Transplants

Compatible Pairs: Last 12 Months



1.Excludes waitlist

2.The Kidney for Life (KFL) initiative of the National Kidney Registry provides an opportunity for a better donor-recipient match

3.Eplet mismatch categories are based on the definition provided by Wiebe C, Kosmoliaptis V, Pochinco D, et al. HLA-DR/DQ molecular mismatch: a prognostic biomarker for primary alloimmunity. Am J Transplant. 2019;19:1708-1719. <https://doi.org/10.1111/ajt.15177>

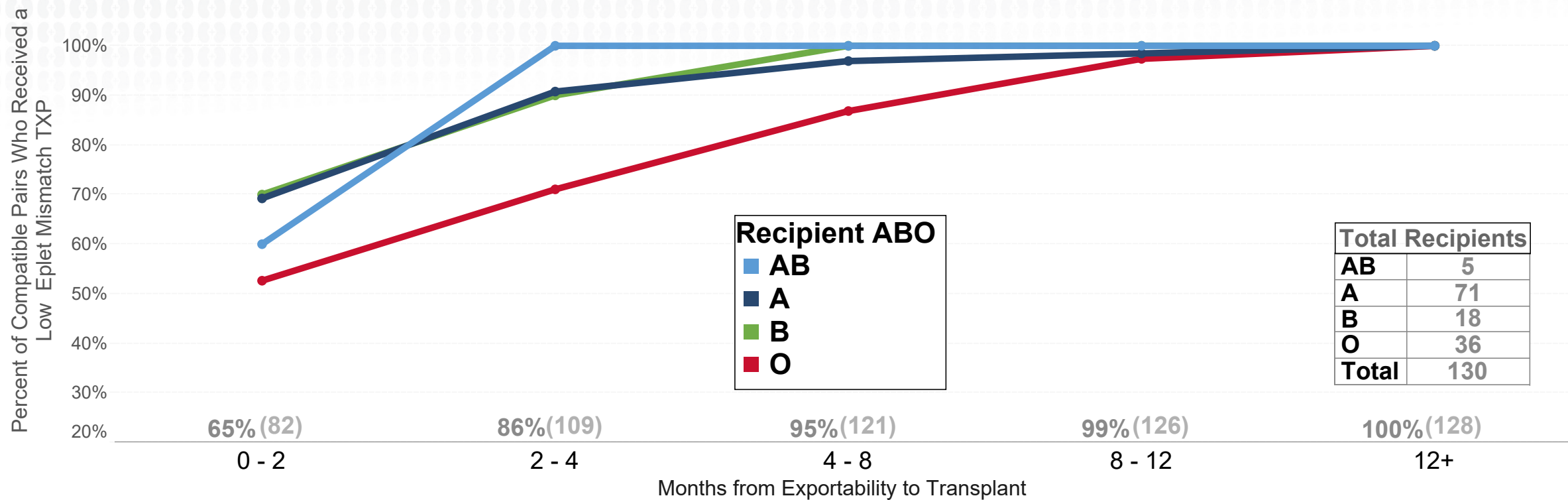
Kidney only

As of 1/1/2025



# Actual Wait Times: Low Eplet Mismatch Transplants

Compatible Pairs: Last 12 Months



	0 - 2	2 - 4	4 - 8	8 - 12	12+
<b>AB</b>	60%	100%	100%	100%	100%
<b>A</b>	69%	91%	97%	98%	100%
<b>B</b>	70%	90%	100%	100%	100%
<b>O</b>	53%	71%	87%	97%	100%

Excludes KFL internal direct. cPRA ≤ 99  
Kidney only  
As of 1/1/2025



# Expert System Center Growth



Data recorded the first day of the month  
Kidney only  
As of 1/1/2025



# Resources

kidneyregistry.com

donorshield.com

kidneytransplantcenters.com

donorcarenet.com

kidneyforlife.org

findakidney.com

livingdonorgames.org

